

So Your Pet's Having Surgery

Q: What do I need for an appointment with the surgeon?
A: Please have your family veterinarian send all pertinent medical records to ProFormance Canine prior to your visit. A referral form can be found on our website. If you have radiographs (X-rays) or blood work, these will normally be sent electronically.

Q: How do I schedule surgery for my pet?
A: Our surgical coordinator will schedule your pet for surgery at a time that is convenient for you. It is rare to have to wait more than a few days for an elective surgery.

Q: What if I have questions about the surgery?
A: The surgeon will explain the surgery and postoperative care to you in detail. We want you to understand the surgical procedure, potential complications, and postoperative care completely. You play an important role in your pet's recovery. Please make certain to ask the surgeon or surgical coordinator if you have any additional questions. All of ProFormance Canine's staff are highly trained and should also be able to answer your questions.



Q: How much will the surgery and related care cost?
A: The surgeon will make an estimate for you prior to scheduling surgery. The surgical coordinator will go over the estimate and answer any questions you have about the costs. Suture removal and pain patch removal are performed at no charge. You will be charged separately for future rechecks. It is extremely rare for us to go outside of this estimate, but if we feel we may, we will contact you as soon as possible. Our first priority is the health and well being of your pet.

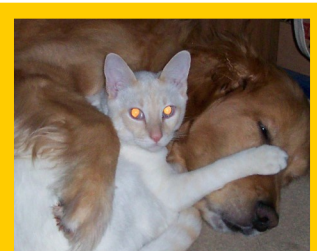
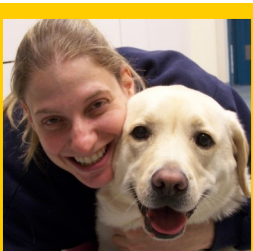
Q: Can my pet eat before or after surgery?
A: Adult animals should have their food and water taken away at Midnight the evening before surgery. Ask the surgical coordinator about special instructions for very young patients or patients with complicated medical conditions. Depending on the type of surgery, and how early in the day the surgery is performed, your pet may get a light meal the same evening after surgery. Otherwise they will be fed the next morning. Please let us know about any special dietary requirements or you can bring your pet's own food.

Q: My pet takes medication. Should I give the medication the morning of surgery?
A: Ask the surgeon or surgical coordinator if you should give the medication. Make sure you bring the bottle of medication with you when you bring your pet for surgery.

Q: When can my pet be groomed or have a bath after surgery?
A: We recommend you bathe your dog prior to surgery. This removes dirt and loose fur which speeds the surgery prep. You should wait 10-14 days after surgery before bathing your pet again. Make certain to tell the groomer about the surgery so they can take extra care that the pet doesn't slip or hurt themselves while being bathed or groomed. **If you have a conformation show dog please talk to the surgeon about surgical shaving requirements.**

Q: What time should my pet arrive at the hospital for surgery?
A: Surgery patients are admitted to the hospital between 8-9 AM. Please walk dogs to the bathroom before you come in. You will be asked to sign the estimate and surgery consent form, as well as, leave a 75% deposit for surgery. Please let us know if you have any last minute instructions or concerns prior to surgery. Make certain you give us a contact phone number for the day of surgery. We will confirm the surgical procedure and appropriate surgery site (left or right) as part of a multi-step safety protocol at the time of admission.

Q: When during the day will my pet's surgery be performed and how will I know how my pet is doing after surgery?
A: We perform scheduled surgery from 9 AM until 7 PM, however, emergency surgeries can throw off our schedule. The surgery order is based on many criteria, and is decided the night before. We understand how anxious it is waiting for news, so you can call anytime to see how your pet is doing. The surgeon will call you as soon as your pet is waking up from surgery. If there is any complication or problem, we will call you directly from the surgery suite. You can call our experienced over-night ICU staff at any time to check on your pet after surgery.



Q: I'm concerned about my pet being under anesthesia. How does that work?

A: We use the same drugs and monitoring equipment used in human medicine. The anesthetic protocol will vary somewhat based on the individual's health and the type of surgery performed. Generally, the patient is given a premedication 10-20 minutes prior to surgery to relax them and decrease the needed dose of general anesthesia. An intravenous catheter is then placed for IV fluids to maintain blood pressure, and also as a quick access if emergency drugs are needed. When we are ready for surgery, the pet is given an intravenous induction drug. We give just enough drug to be able to open their mouth and place a tube into their trachea. The patient is then kept on gas anesthesia for general anesthesia. We use Isoflurane almost exclusively, however, Sevoflurane is occasionally used as needed. All of our patients are monitored by at least a pulse oximeter at all times. Patients in the surgery suites will be monitored with additional equipment including an ECG, end title CO2 and automatic blood pressure monitor. After surgery an ICU technician will continue monitor and provide post-operative care to your pet. You can go to our websites and see more information about anesthesia under the tab "Services" then "Anesthesia".

Q: Will my pet be in pain after surgery?

A: We take pain control very seriously. **ALL** surgery patients get postoperative narcotics before they even wake from surgery. Standing orders are given for pain medication which can be over-ridden by the ICU staff if they feel the patient needs more, or different, pain relief. The first 12-24 hours after surgery are the most critical for pain control. We generally discharge dogs after surgery with anti-inflammatories for 5 days and Tramadol (a pain medication) for 3 days. Cats will often be discharged from the hospital with oral Buprinex (a pain medication) for 3 days. In some situations we will use a Fentanyl patch which slowly releases pain medication through the skin. This takes 12-24 hours to take affect, but lasts for 3-5 days.

Q: When do I pick up my pet and what do we do once we get home?

A: Most elective surgery patients will stay in the hospital over night and go home the next day. Certain types of surgeries may require a longer hospitalization stay. Please call ProFormance Canine the morning after surgery to set-up a discharge appointment. A surgical coordinator will explain the written discharge instructions you will receive, and answer any questions. Your next visit (normally suture removal) can be scheduled at this time. If you have any questions once you get home please call. It is imperative you understand and follow the discharge instructions to reduce potential problems and complications. We want the best outcome for your pet. We understand how difficult exercise restriction and managing a pet with an Elizabethan collar can be, but these are the most common causes of postoperative complications.

Q: When can my pet go back to running and playing?

A: Return to function (running, playing, training, working) will be specifically stated in the discharge instructions. It is very important to follow these instructions to achieve the best surgical outcome. If you are having difficulty keeping your pet confined, call us for suggestions.

Physical therapy can generally be done by the pet owner. We will teach you how to perform common physical therapy techniques. Rarely, a pet may need professional physical therapy for difficult cases or if a more rapid return to function is desired. Speak with your surgeon or surgery coordinator about scheduling professional physical therapy.



www.proformancecanine.com
reception@ProFormanceCanine.com
198 Ayer Rd., Suite 102
Harvard, MA 01451
978-391-1500